



Predicting Infectious Diseases
via Environment and Climate

PRIDE-C

Forecasting diseases in DHIS2 and R

Organization: NGO Pivot, Madagascar Ministry of Health
Authors: Michelle Evans, Bénédicte Razafinjato, Ezra Mitsinjoniala, Rufin Andriandaza, Dany Bakoly Ranoaritiana

MEASURE

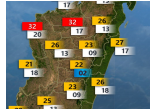
Respiratory
Infection



Malaria



Diarrheal
Disease



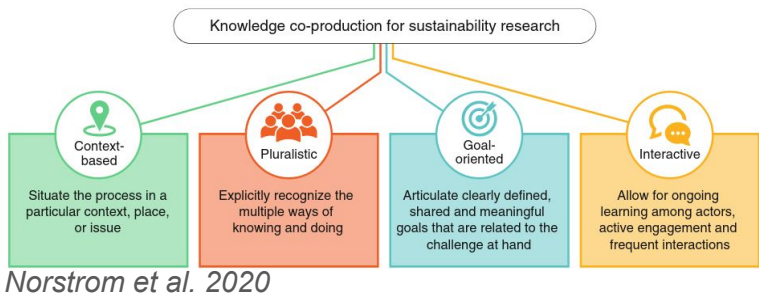
Case notifications of childhood diseases

Remotely-sensed climate variables

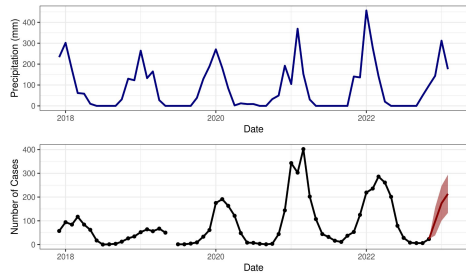
FORECAST

Co-produce models via participatory workshops

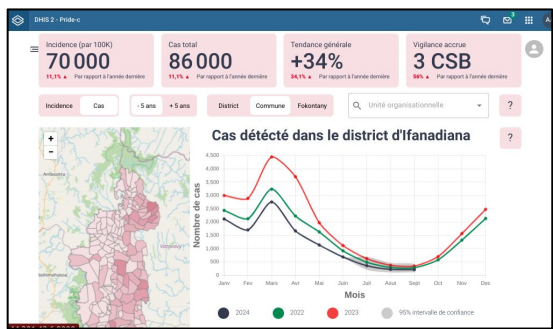
Ensemble prediction models



Norstrom et al. 2020



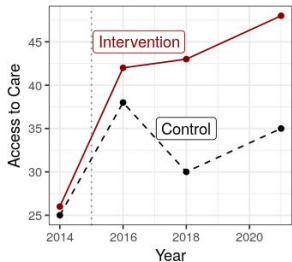
INFORM



Co-develop
open-source
software with
developers and
end-users

ASSESS

Difference-in-Difference
Analysis



Quantity
Visitation rates

Timeliness
Cases diagnosed in 24 hrs

Quality
Cases correctly diagnosed

Burden
Incidence Rates



Evaluate decision making
processes

Open-source R package to implement forecasting workflow

Data Processing

import_data

- Import data from DHIS2

prep_data

- Lag predictors
- Normalize predictors
- Impute missing predictors
- Create spatial structure

split_cv_rolling

- Create multiple cross-validation
sets containing assessment/
analysis splits (cv_set)
- Uses rolling origin splits

Model Training

tune_*

- Split into tune/test via temporal
stratification
- Tune hyperparameters

fit_*

- Split into tune/test via temporal
stratification
- Tune hyperparameters

eval_performance

- Evaluate on assessment and
analysis data via multiple metrics

inv_variables_*

- Variable importance via
permutation
- counterfactual/pdp plots

Forecasting

ensemble_forecast

- Create forecast for one
cv_set using ensemble of
models based on weights

export_forecast

- Export forecast to DHIS2

Learn more about the
PRIDE-C R package
on our website:

<https://pivot-madagascar.github.io/PRIDEC-package/>



mevans@pivotworks.org



mv-evans.bsky.social



This project is funded by a Wellcome Trust Digital Technology Award.